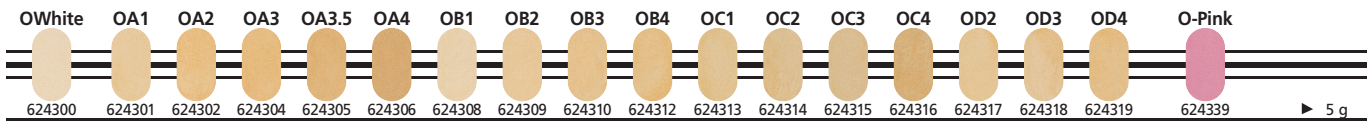
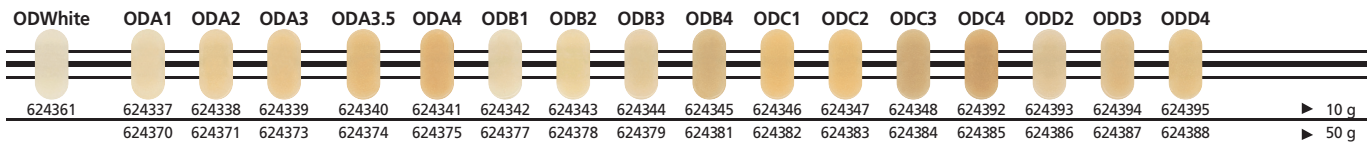


Farbtabelle Nuance 750

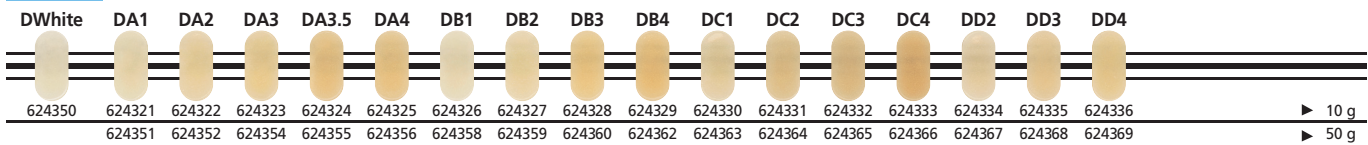
Opaker



Opak-Dentin



Dentin

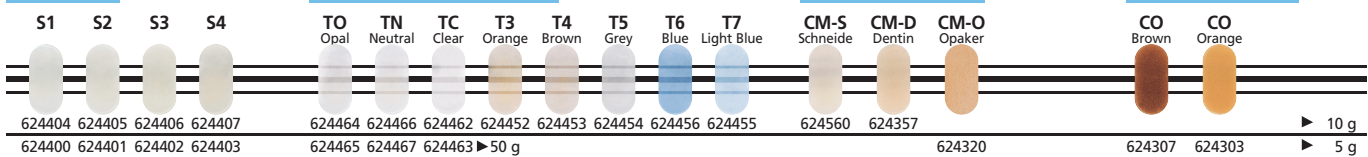


Schneide

Transluzenz/Transparenz

Korrekturmassen

Cervical Opaker



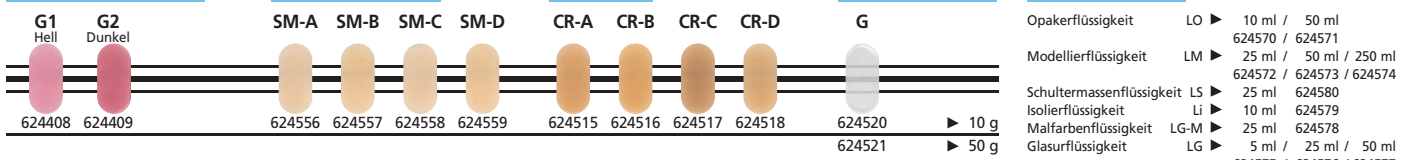
Zahnfleischmassen

Schultermassen

Chroma

Glaze / Glasur

Flüssigkeiten



Kombinationstabelle Nuance 750

	Bleach	A						B				C				D			Korrekturmaterial	Liquid
Opaker	O-White	O-A1	O-A2	O-A3	O-A3,5	O-A4	O-B1	O-B2	O-B3	O-B4	O-C1	O-C2	O-C3	O-C4	O-D2	O-D3	O-D4	CM-0	Opakerfluid LO	
Opak-Dentin	OD-White	OD-A1	OD-A2	OD-A3	OD-A3,5	OD-A4	OD-B1	OD-B2	OD-B3	OD-B4	OD-C1	OD-C2	OD-C3	OD-C4	OD-D2	OD-D3	OD-D4		Modellierfluid LM	
Dentin	D-White	D-A1	D-A2	D-A3	D-A3,5	D-A4	D-B1	D-B2	D-B3	D-B4	D-C1	D-C2	D-C3	D-C4	D-D2	D-D3	D-D4	CM-D	Modellierfluid LM	
Schneide	1	1	2	2	4	4	1	2	3	4	2	2	3	4	1	2	3	CM-S	Modellierfluid LM	

Chroma Effektdentin	CR-A	CR-B	CR-C	CR-D	Modellierfluid LM
Schultermasse	SM-A	SM-B	SM-C	SM-D	Schultermassenfluid LS Isolierfluid LI

Transpamassen:	Cervical-Opaker	Zahnfleischmasse	Malfarbenset 750 / 850	Malfarbenfluid LG-M
T Neutral	CO Braun	G 1 Hell	SC-1 Weiss	
T Clear	CO Orange	G 2 Dunkel	SC-2 Gelb	
T Opal			SC-3 Orange	
T 3 Orange			SC-4 Braun	
T 4 Braun		Glasmasse	SC-5 Violett	
T 5 Grau		Glaser G	SC-6 Blau	
T 6 Blau			SC-7 Schwarz	
T 7 Light Blue			SC-8 Grau	

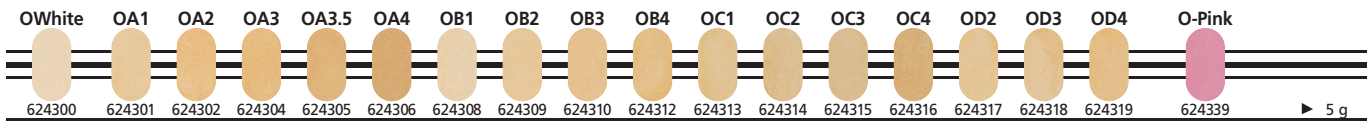
Die Zusammenstellung der Keramiksets entnehmen Sie bitte dem Katalog Legierung mit WAK 15,9 – 16,8

Nuance 750 Brenntabelle	Wash Brand	Opaker Brand	Schultermasse Brand	1. Dentin Brand	2. Dentin Brand	Glasur Brand
Absenken der Ausstellfläche	-	-	-	-	-	-
Haltezeit in Min.	2	2	1	1	1	1
Brenntemperatur °C	820	820	810	790	785	755
Vacuum Ende °C	819	819	809	789	784	-
Vacuum Start °C	450	450	450	450	450	-
Temperaturanstieg °C / Min.	55	55	45	45	45	55
Trockenzeit in Min.	6	6	4	4	4	4
Vorheiztemperatur °C	400	400	400	400	400	400

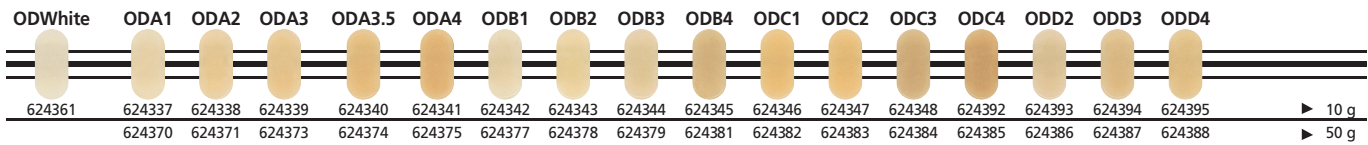
Die Temperaturangaben sind Richtwerte, sie können je nach verwendetem Ofen variieren.

Farbtabelle Nuance 750

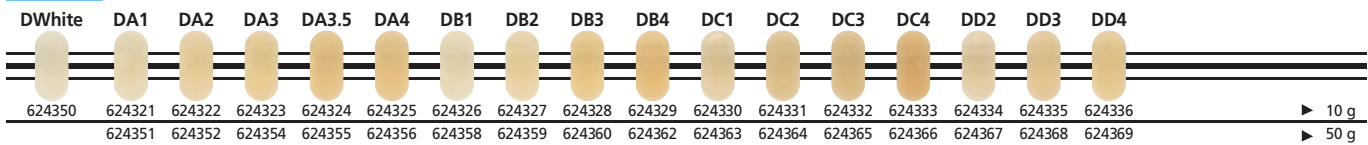
Opaker



Opak-Dentin



Dentin

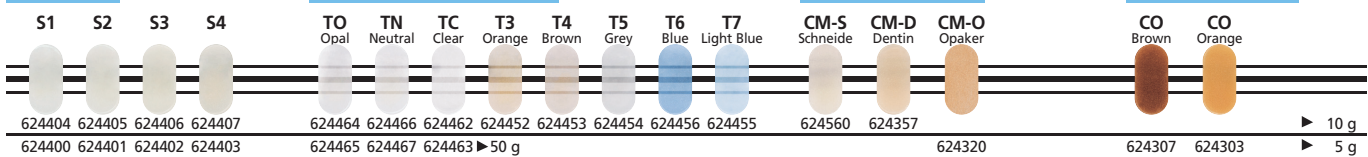


Schneide

Transluzenz/Transparenz

Korrekturmassen

Cervical Opaker



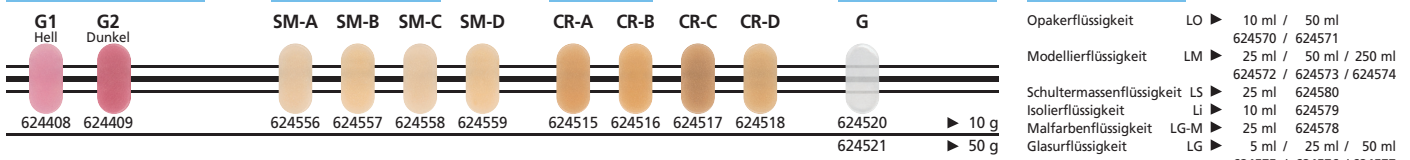
Zahnfleischmassen

Schultermassen

Chroma

Glaze / Glasur

Flüssigkeiten



Combination chart Nuance 750

	Bleach	A					B				C				D			add-on material	Liquid
Opaker	O-White	O-A1	O-A2	O-A3	O-A3,5	O-A4	O-B1	O-B2	O-B3	O-B4	O-C1	O-C2	O-C3	O-C4	O-D2	O-D3	O-D4	CM-0	opaquer fluid LO
Opaker-Dentine	OD-White	OD-A1	OD-A2	OD-A3	OD-A3,5	OD-A4	OD-B1	OD-B2	OD-B3	OD-B4	OD-C1	OD-C2	OD-C3	OD-C4	OD-D2	OD-D3	OD-D4		modelling fluid LM
Dentine	D-White	D-A1	D-A2	D-A3	D-A3,5	D-A4	D-B1	D-B2	D-B3	D-B4	D-C1	D-C2	D-C3	D-C4	D-D2	D-D3	D-D4	CM-D	modelling fluid LM
Incisal	1	1	2	2	4	4	1	2	3	4	2	2	3	4	1	2	3	CM-S	modelling fluid LM

Chroma Effect dentine	CR-A	CR-B	CR-C	CR-D	modelling fluid LM
Shoulder porcelain	SM-A	SM-B	SM-C	SM-D	shoulder ceramic fluid LS insulation fluid LI

Transpa-mass:	cervical opaquer	gingiva mass	color set 750 / 850	color fluid LG-M
T Neutral	CO brown	G 1 light	SC-1 white	
T Clear	CO Orange	G 2 dark	SC-2 yellow	
T Opal			SC-3 Orange	
T 3 Orange			SC-4 brown	
T 4 brown		glaze material	SC-5 Violet	
T 5 grey		glaze G	SC-6 blue	
T 6 blue			SC-7 black	
T 7 Light blue			SC-8 grey	

Please check our catalog for the combination of the ceramic sets.

Nuance 750 firing chart	Wash firing	Opaker firing	Shoulder firing	1 st Dentine firing	2 nd Dentine firing	Glaze firing
lowering of the furnace lift	-	-	-	-	-	-
Holding time in min.	2	2	1	1	1	1
Firing temperature °C	820	820	810	790	785	755
Vacuum end °C	819	819	809	789	784	-
Vacuum start °C	450	450	450	450	450	-
Heat rate in °C per min.	55	55	45	45	45	55
Drying time in min.	6	6	4	4	4	4
preheating temperature °C	400	400	400	400	400	400

These temperature are guidelines. They may vary depending on the furnace in use.